





# Adult learning – the context

## A very diversified sector

- Lifelong, life-wide
- Diversity of
  - learners' profiles and needs
  - Providers
  - Staff profiles
- Flexible learning settings

## With lots of challenges...

- Funding
- Engaging adult learners
- Overlap with other sectors
  
- Differences between countries
- Limited Eur. cooperation
- No Eur. space to share expertise



EU 2020, ET 2020,  
Copenhagen process ...

## Adult Learning

**European Agenda for Adult Learning**  
(Council Resolution 2011)

**Strategic vision for AL until 2020**

**13 Long-term strategic objectives for 2020**

**Priority areas  
for 2012-2014**

**2015 Review**  
**New priority areas  
for 2015-2020**



## Vision for Adult Learning 2011-2020

- **Access** at any time in life
- High **quality** learning for personal, social, economic ends
- **Provision** – local, flexible, learner-centred, learning outcomes, validation
- **Partnership** approach with all stakeholders
- Adequate **resourcing**, fairly shared
- **Raise awareness** of benefits



2010

The idea of EPALE was born...

2011-  
2012

Feasibility study: yes we can !

2013

Central Support Service

2014

National Support Services

2015

Official launch of EPALE

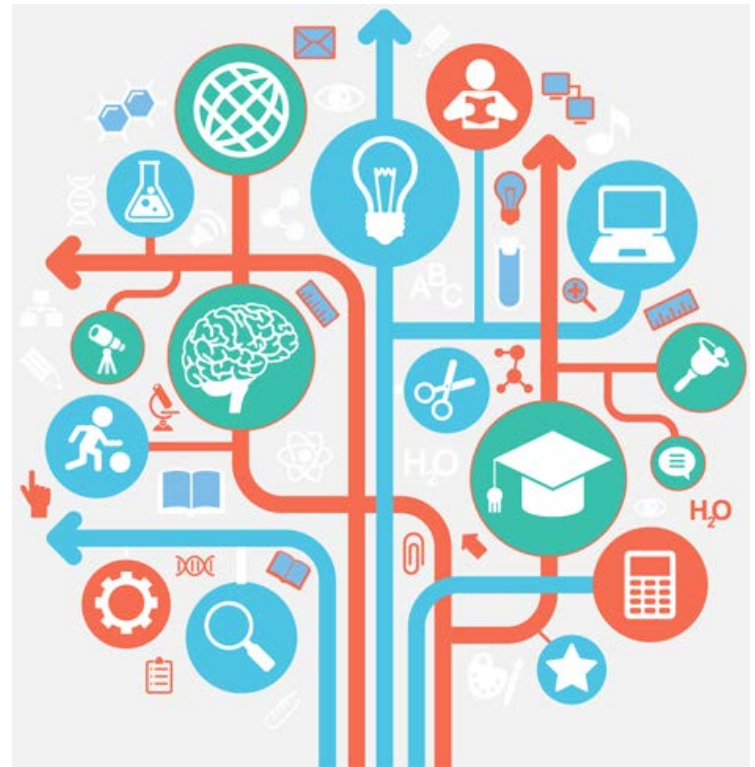


## Objective

*EPALE is designed to become the reference point on adult learning in Europe, and should become essential to any professional in the field.*

# EPALE

# Target group





**Professionals**  
*involved in  
organising,  
funding or  
delivering  
adult  
education*

- Providers and their staff
- National associations of AE
- **Policy-makers**
- Universities / researchers
- Media / journalists
- Local administrations

## Working in various domains

Basic skills

2<sup>nd</sup> chance education

Guidance

C-VET

Social inclusion

Culture

...

## With many different learners

Low-skilled

Unemployed

Employees

Migrants

(ex) prisoners

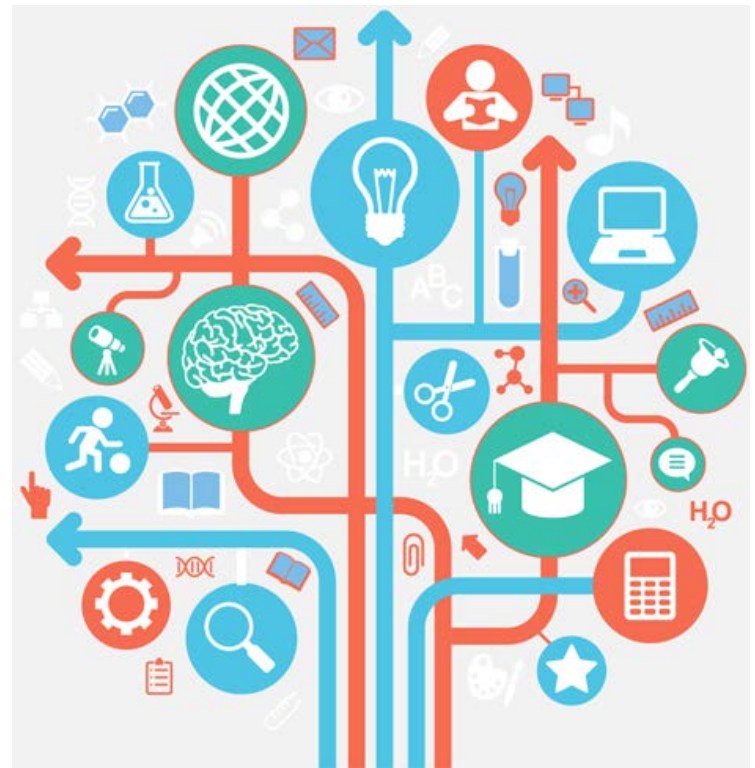
Seniors

People with disabilities

...

= > ALL ADULTS

# What's in EPALE?



# Main characteristics

Collaborative

User driven

Multilingual

# What can you do in EPALE?

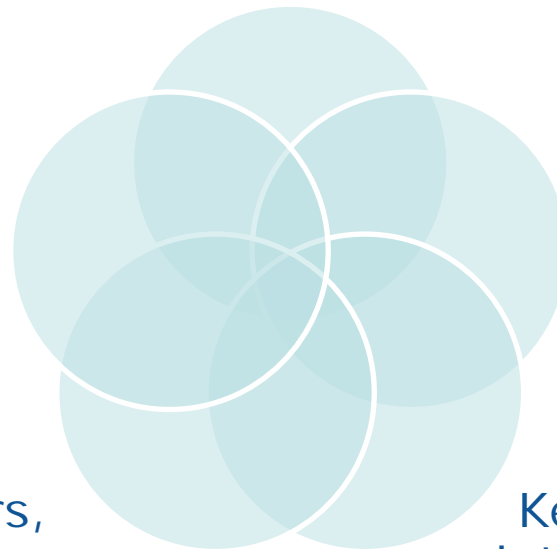
Share ideas and results

Find out about  
professional  
development  
opportunities

Find inspiration

Meet partners,  
connect with peers

Keep up to date with  
latest news in the field



# Features

Calendar of  
events and  
courses

E-Library

News

Social media

Info on  
funding and  
awards

Blog

*Communities  
of practice*

*Glossary*

*Partner  
search*

# Themes

Learner support

Learning environments

Life skills

Quality

Policies, strategies and financing



<http://ec.europa.eu/epale>

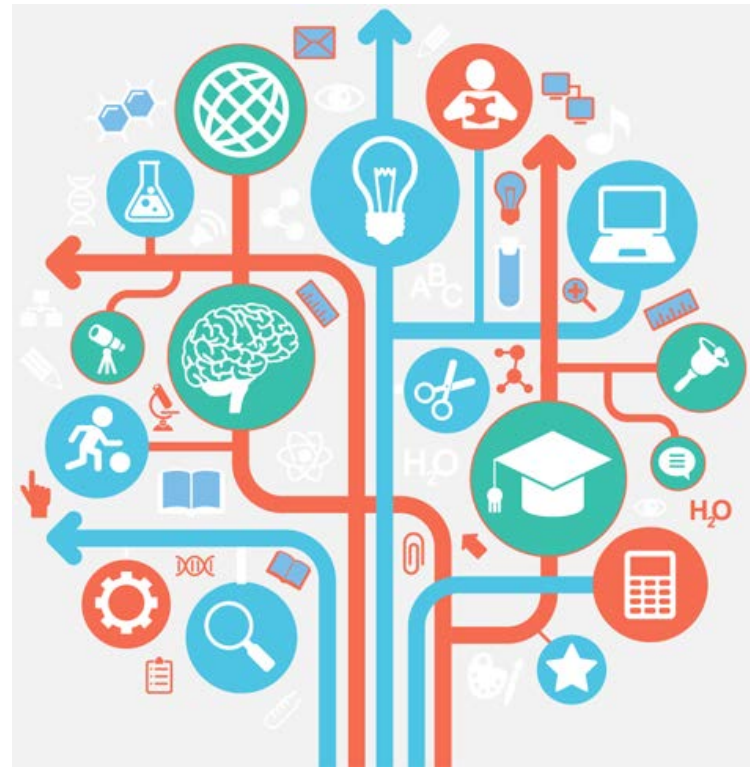
[Twitter](#)

[Facebook](#)

[LinkedIn](#)



# EPALE key players





## EPALE Steering Committee

DG EMPL	DG EAC	EACEA
Political steering	General management	Contracts CSS + NSS

## Implementation

Central Support Service (CSS)	National Support Services (NSS)
Development of platform	Promotion and feeding of EPALE

## NSSs in all E+ countries, except (in 2015):

Greece

Hungary

Latvia

Albania

Former  
Yugoslav  
Republic of  
Macedonia

Liechtenstein

Montenegro

Serbia

Turkey



## Register

- Comment
- Blog
- Find partners

## Contribute

- Events
- Ressources
- Articles

## Promote it

- At national...
- ... and local level



## People (end of May 2015)

4,512 users registered in the platform



2,704 likes in Facebook



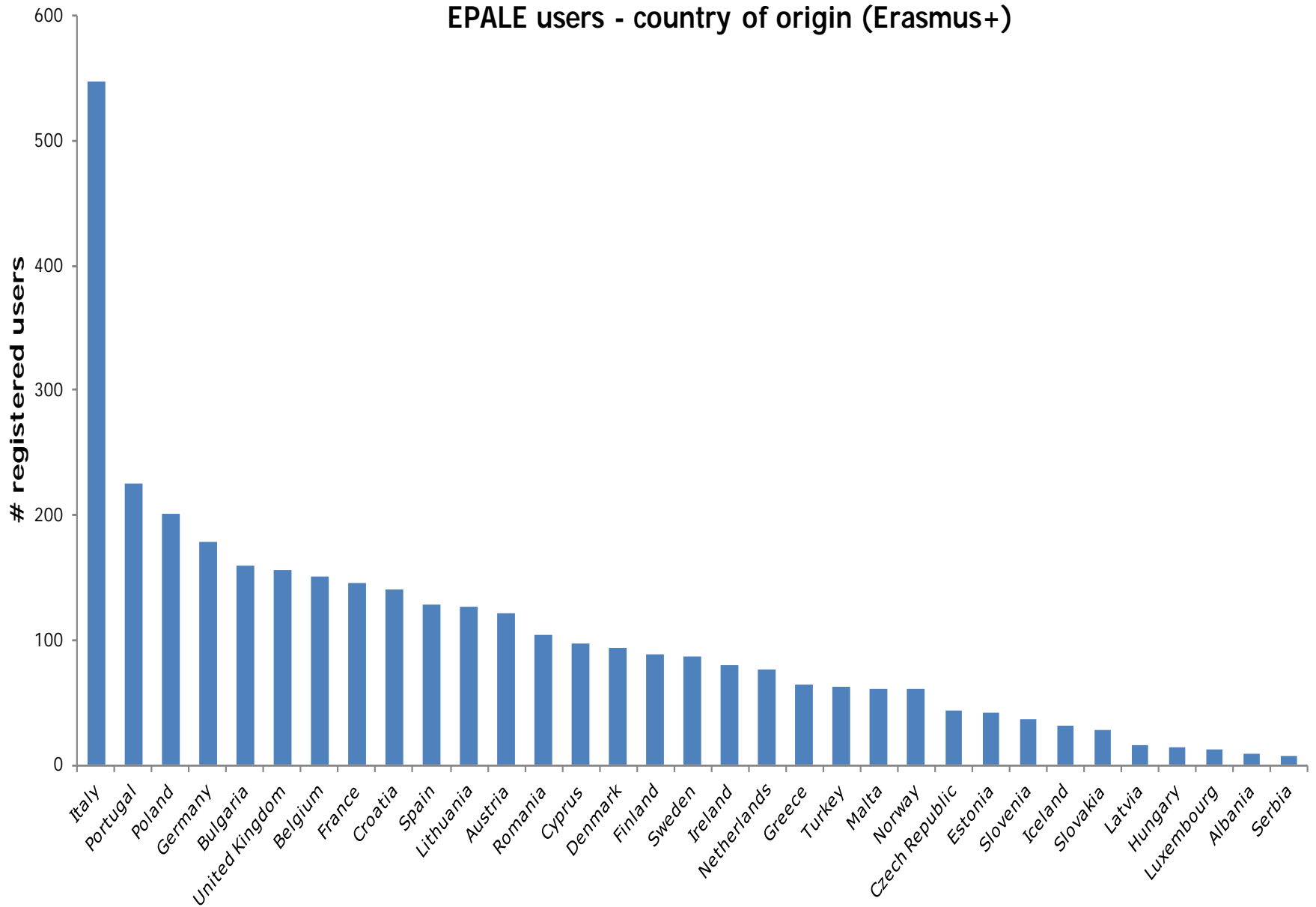
7,186 followers in Twitter



290 members in LinkedIn

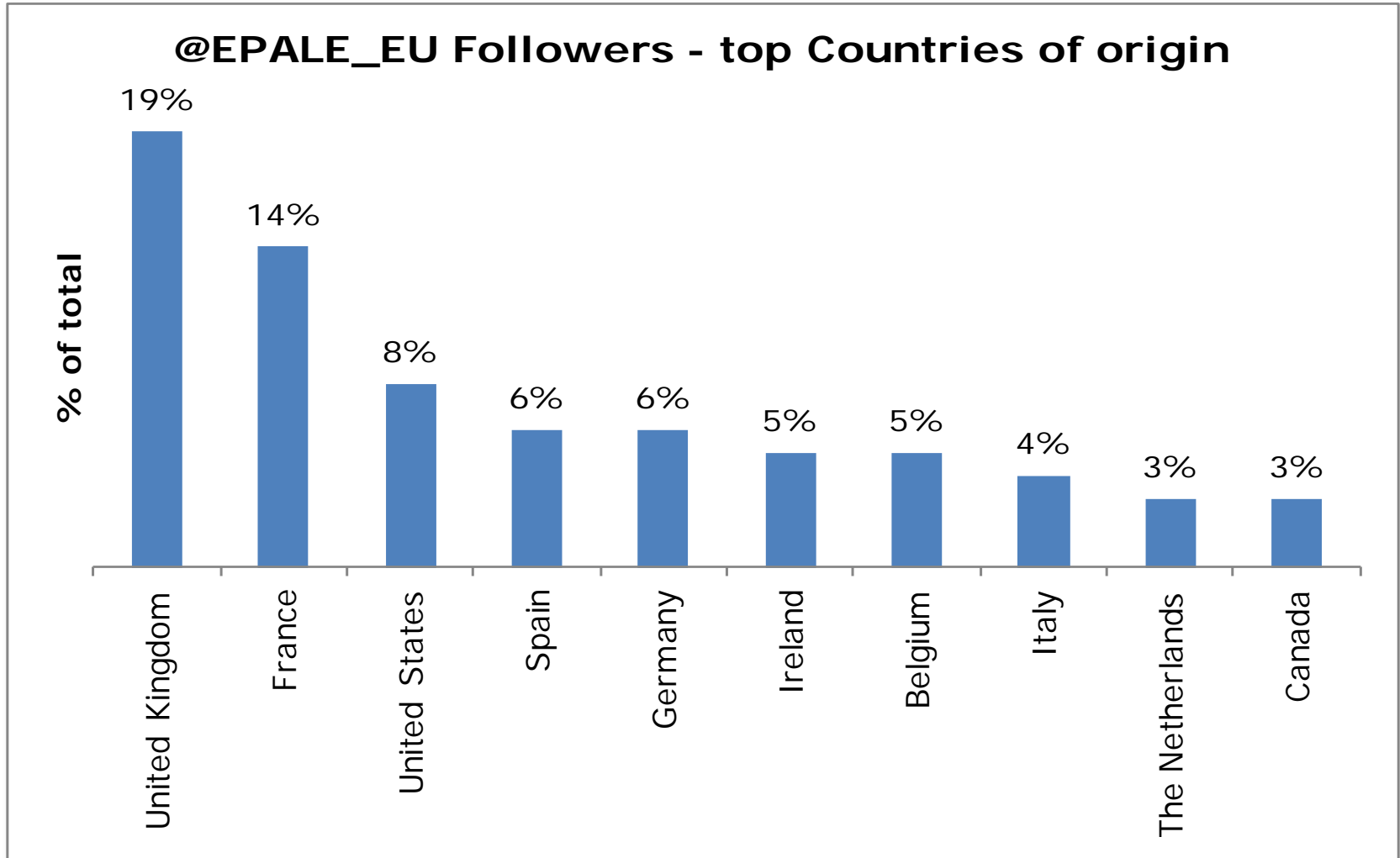


## EPALE users - country of origin (Erasmus+)

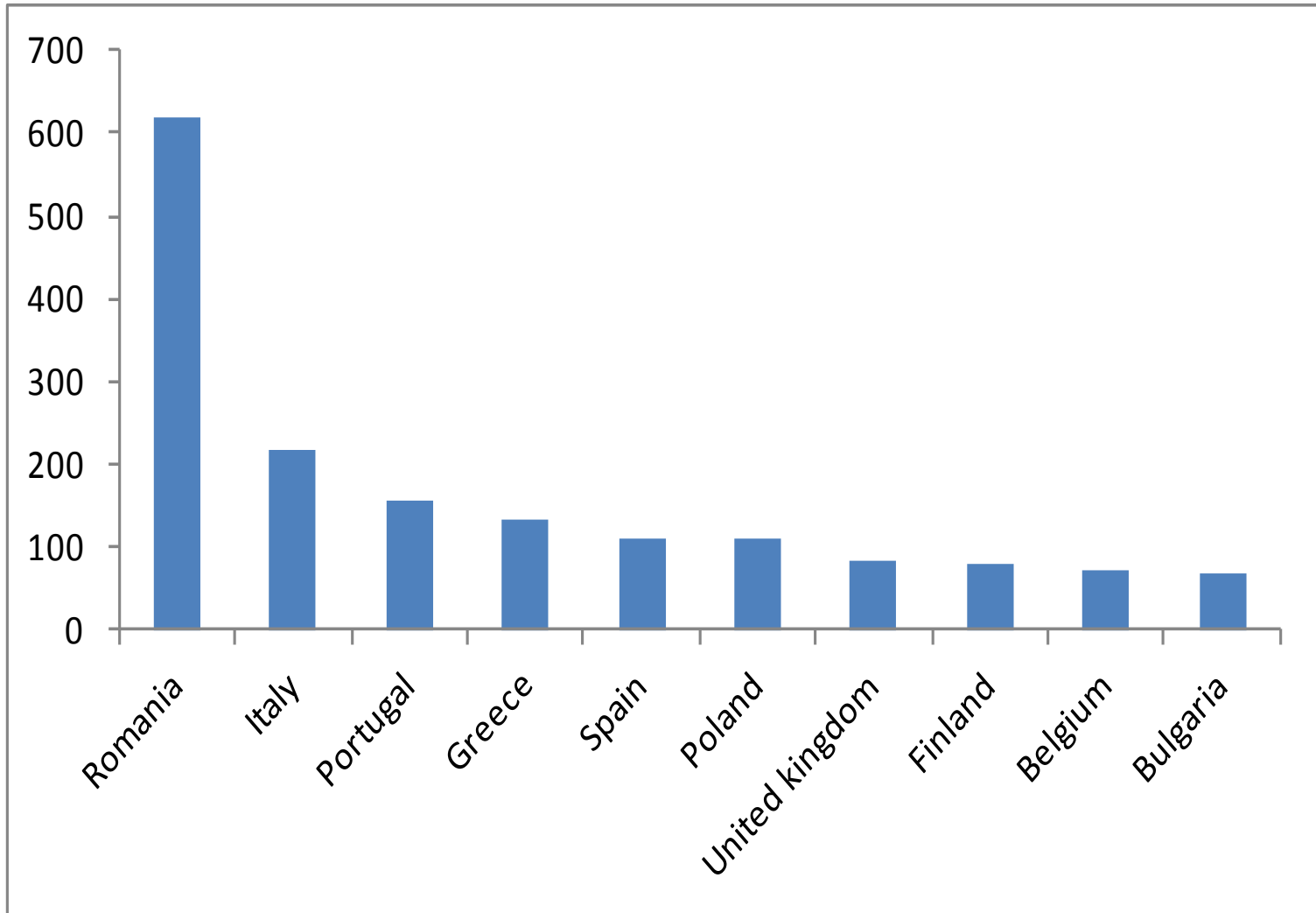




# TWITTER



# FACEBOOK



## Content (as of 30/04/2015)

409 articles

2 newsletters

249 blog posts

1093 library resources

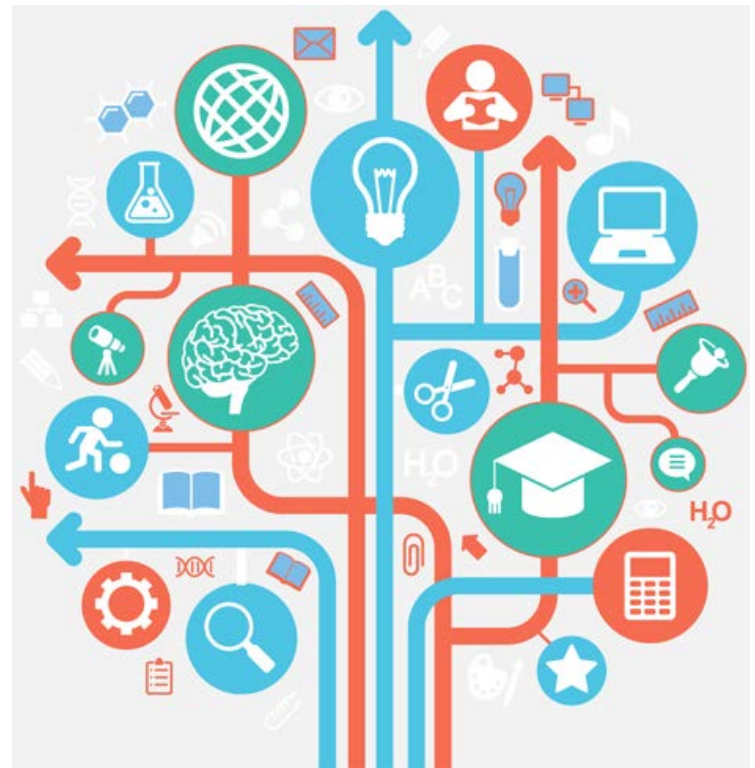
427 events



## Since the beginning of 2015:

- Launch of new features
  - Resource centre
  - Thematic pages
  - Partner-search
  
- Launch event (in Brussels) - 15<sup>th</sup> of April

# What's next ?



- *New homepage*
- *Review of user-friendliness*
- *More thematic pages, discussion groups and interaction*
- *Community building*
- *Reaching 20.000 users by the end of 2015*

**Adult  
Learning  
priorities  
2015-2020**



**Governance**



**Supply and take up**



**Flexibility and access**



**Quality**



## More information

<http://ec.europa.eu/epale/>

## Questions, suggestions...

[maria-luisa.garcia-minguez@ec.europa.eu](mailto:maria-luisa.garcia-minguez@ec.europa.eu)